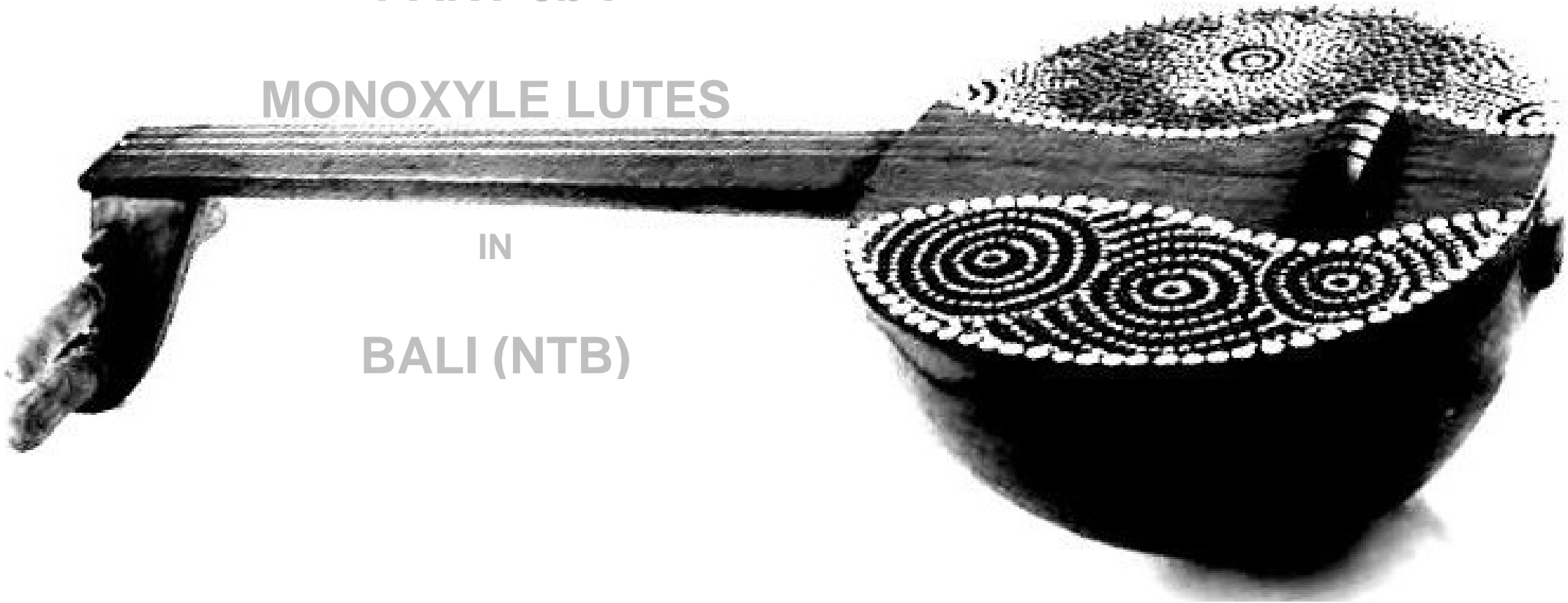


PART 6b :

MONOXYLE LUTES

IN

BALI (NTB)



MONOXYLE LUTES / INDEX : v.32 - June 2018

http://inthegapbetween.free.fr/pierre/GAMBUS_PROJECT/06_PORTFOLIO_part6.pdf

More info about the remnant monoxyle lutes in my topical chapters below:

http://inthegapbetween.free.fr/pierre/GAMBUS_PROJECT/01_qanbus-au-yemen.pdf (coming soon)
http://inthegapbetween.free.fr/pierre/GAMBUS_PROJECT/02_gambus_swahili_coast_and_comoros.pdf
http://inthegapbetween.free.fr/pierre/GAMBUS_PROJECT/04_gambus-au-alam_melayu.pdf
http://inthegapbetween.free.fr/pierre/GAMBUS_PROJECT/05_gambus_a_borneo.pdf
http://inthegapbetween.free.fr/pierre/GAMBUS_PROJECT/06_gambus-au-NTB.pdf
http://inthegapbetween.free.fr/pierre/GAMBUS_PROJECT/07_gambus-au-NTT.pdf
http://inthegapbetween.free.fr/pierre/GAMBUS_PROJECT/08_gambus-au-sulawesi_moluccas.pdf
http://inthegapbetween.free.fr/pierre/GAMBUS_PROJECT/99_BANGSAWAN-&-HAMDOLOK.pdf

More info about lutery manufacturing in my chapters below:

http://inthegapbetween.free.fr/pierre/PROCESS_PROJECT/process_qanbus.pdf
http://inthegapbetween.free.fr/pierre/PROCESS_PROJECT/process_javanese_bambu_gambus.pdf
http://inthegapbetween.free.fr/pierre/PROCESS_PROJECT/process_malay_gambus_seludang_wooden.pdf
http://inthegapbetween.free.fr/pierre/PROCESS_PROJECT/process_malay_gambus_Hadramawt.pdf
http://inthegapbetween.free.fr/pierre/PROCESS_PROJECT/process_malay_gambus_hijaz_skin.pdf
http://inthegapbetween.free.fr/pierre/PROCESS_PROJECT/process_dambus_bangka.pdf
http://inthegapbetween.free.fr/pierre/PROCESS_PROJECT/process_panting_lute_kalimantan.pdf
http://inthegapbetween.free.fr/pierre/PROCESS_PROJECT/process_baglama.pdf
http://inthegapbetween.free.fr/pierre/PROCESS_PROJECT/process_oud.pdf
http://inthegapbetween.free.fr/pierre/PROCESS_PROJECT/process_tar.pdf
http://inthegapbetween.free.fr/pierre/PROCESS_PROJECT/process_setar.pdf
http://inthegapbetween.free.fr/pierre/PROCESS_PROJECT/process_santour.pdf

http://inthe-gap-between.free.fr/pierre/GAMBUS_PROJECT/PORTFOLIO.pdf

Yemeni items

- Item 001 San'a (exile)
- Item 002 San'a
- Item 003 San'a
- Item 004 Al-Ajami's, San'a
- Item 005 San'a
- Item 006 San'a
- Item 007 San'a
- Item 008 San'a
- Item 009 Al-Nunu's, San'a
- Item 010 San'a
- Item 011 replica Loopuyt
- Item 012 House of Culture, San'a
- Item 013 Al-Jumai's, San'a
- Item 014 Al-Harith's , San'a
- Item 015 Mokrani's , San'a
- Item 016 Mokrani's , San'a
- Item 017 San'a curio, San'a
- Item 018 Edimburgh museum, UK
- Item 019 Metropolitan museum, NYC, USA
- Item 020 Awni / Hasan Al-Ajami's, San'a
- Item 021 Jeff Greene, NYC, USA
- Item 022 Metropolitan museum, NYC, USA
- Item 023 Santa Cecilia auditorium, Italy
- Item 024 Metropolitan museum, NYC, USA
- Item 025 Najat Baraka's , San'a
- Item 026 Metropolitan museum, NYC, USA
- Item 027 unknown San'a,
- Item 028 Hijaz (Leiden museum),
- Item 029 Quturi, 2013
- Item 030 Hijaz (ebay),
- Item 031 Replica (Cronier, Burkina),
- Item 032 replica Loopuyt (2)
- Item 033 unknown San'a,
-

http://inthe-gap-between.free.fr/pierre/PORTFOLIO_part2.pdf

Swahili items

- Item 101 Zanzibar
- Item 102 replica Mombasa
- Item 103 Mombasa
- Item 104 tanzanian coast
- Item 105 Mwanza, Tanzania
- Item 106 Mwanza, Tanzania
- Item 107 Quwaytara, Zanzibar

- Item 108 Kenya (Leiden museum)
- Item 109 Kenya/Tanzania? (ebay)
- Item 110 "Mgodro group", Zanzibar
- Item 111 Swahili (Teater Museum, Stockholm)

Comorian Items

- Item 201 Domoni, East Nzuani isl.
- Item 202 Nzuani isl.
- Item 203 Sima, West Nzuani isl.
- Item 205 NW Madagascar
- Item 206 NW Madagascar
- Item 207 NW Madagascar
- Item 208 NW Madagascar
- Item 209 NW Madagascar
- Item 210 Mwali
- Item 215 Mjamawe, N Nzuani
- Item 216 Domoni, East Nzuani isl.
- Item 217 Domoni, East Nzuani isl.
- Item 219 Mwali
- Item 220 Mwali
- Item 221 Mwali
- Item 222 Domoni, East Nzuani isl.
- Item 223 Mjamawe, N Nzuani
- Item 226 Mwali ? / Scottsdale museum, AZ
- Item 227 Diego Suarez, Madagascar
- Item 228 Domoni, East Nzuani isl.
- Item 229 Domoni, East Nzuani isl.
- Item 230 Domoni, East Nzuani isl.
- Item 231 Mjamawe, N Nzuani
- Item 232 Domoni, East Nzuani isl.
- Item 233 Mwali
- Item 234 NW Madagascar (Leiden Museum)
- Item 235 Mwali
- Item 236 Mwali
- Item 237 Mwali
- Item 238 Chagaga, Domoni, East Nzuani isl.

http://inthe-gap-between.free.fr/pierre/GAMBUS_PROJECT/PORTFOLIO_part3.pdf

Mahore Island Items (french Comoro)

- Item 501 Boueni, South Mahore
- Item 502 Mr Linibwe, Mahore
- Item 503 Tsararano, East Mahore
- Item 504 Tsararano, East Mahore
- Item 505 Chirongui, S-W Mahore
- Item 506 "Tsounga", Mahore?
- Item 507 (Klan Demba) Chiconi, W Mahore
- Item 508 (Gabusi café) Chiconi, W Mahore
- Item 509 Chiconi, W Mahore
- Item 510 Acoua, NW Mahore
- Item 511 Msangamuji, NW Mahore
- Item 512 Chiconi, W Mahore
- Item 513 Chiconi, W Mahore
- Item 514 Acoua ?, N W Mahore
- Item 515 Chiconi, W Mahore

- Item 516 Tsoundzou, W Mahore
- Item 517 Msangamuji, NW Mahore
- Item 518 Mwali / Dzoumogne
- Item 519 Baco / Bandrélé ??
- Item 520 Chirongui, S-W Mahore
- Item 522 Mwali / Passamainty
- Item 523 Chiconi, W Mahore
- Item 524 Dzoumogne, N-E Mahore
- Item 525 Chirongui, S-E Mahore
- Item 526 Chiconi, W Mahore
- Item 531 Chiconi, W Mahore
- Item 532 Msangamuji ?, W Mahore
- Item 533 Msangamuji ?, W Mahore
- Item 534 Msangamuji ?, W Mahore
- Item 535 Chiconi, W Mahore
- Item 536 Chirongui, S-W Mahore
- Item 537 Chiconi, W Mahore
- Item 538 Chiconi?, W Mahore
- Item 539 Chiconi, W Mahore
- Item 540 Msangamuji ?, W Mahore
- Item 541 Chiconi, W Mahore (ASSU)
- Item 542 Chirongui, S-W Mahore
- Item 543 Bandrélé, S-E Mahore
- Item 544 Chirongui, S-W Mahore
- Item 545 Chirongui, S-W Mahore
- Item 546 replica Burkina Faso
- Item 547 Chirongui?, S-W Mahore
- Item 548 unknown bulky, Mahore
- Item 549 Chiconi, W Mahore (Comité)
- Item 550 Chiconi, W Mahore)
- Item 551 Chiconi, W Mahore
- Item 552 Choco, Chiconi, W Mahore
- Item 553 Chirongui, S-W Mahore
-

http://intheqapbetween.free.fr/pierre/GAMBUS/PROJECT/4a_PORTFOLIO_part4a.pdf
http://intheqapbetween.free.fr/pierre/GAMBUS/PROJECT/4c_PORTFOLIO_part4c.pdf
http://intheqapbetween.free.fr/pierre/GAMBUS/PROJECT/4e_PORTFOLIO_part4e.pdf
http://intheqapbetween.free.fr/pierre/GAMBUS/PROJECT/4f_PORTFOLIO_part4f.pdf

PART4a : ALAM MELAYU : NORTH SUMATRA
PART4c : ALAM MELAYU : LAMPUNG & ISIANDS
PART4e : ALAM MELAYU : RIAU
PART4f : ALAM MELAYU : LESS-KNOWN RIAU

- Item 300 KePri/ Riau island, China Sea
- Item 301 Batak, Sumatra
- Item 302 Riau, Sumatra
- Item 303 Bengkalis?, Sumatra
- Item 304 undefined, Sumatra
- Item 305 Riau, Sumatra
- Item 306 Bengkalis, Riau dct.
- Item 307 Bengkalis, Riau dct.
- Item 308 Penyangat (Riau isl)
- Item 309 Penyangat (Riau isl)
- Item 310 SE Sumatra
- Item 311 Medan, N. Sumatra
- Item 312 Medan, N. Sumatra
- Item 313 Medan ?, N. Sumatra
- Item 314 Medan, N. Sumatra
- Item 315 Kayu Agung, SE. Sumatra
- Item 316 Palembang, SE. Sumatra
- Item 317 Indonesia (tropenmuseum)
- Item 318 Indonesia (tropenmuseum)
- Item 319 Indonesia (tropenmuseum)
- Item 320 Riau, Indonesia.
- Item 321 Siak? Riau dct, Sumatra.
- Item 322 Mr Khairul Asrar, Riau
- Item 323 Firdaus in Siak, Riau dct, Sumatra.
- Item 324 Firdaus in Siak, Riau dct, Sumatra
- Item 325 Sungwai Rawa, Riau dct, Sumatra.
- Item 326 Riau dct, Sumatra.
- Item 327 Riau dct, Sumatra.(Indonesia heritage.org)
- Item 328 Sumatra.Selatan (Indonesia heritage.org)
- Item 329 Medan, N. Sumatra
- Item 330 Medan, N. Sumatra
- Item 331 Bengkalis, Sumatra.
- Item 332 Lampung, SE Sumatra
- Item 333 Jambi Isl, SE Sumatra
- Item 334 Jambi Isl, SE Sumatra
- Item 335 Jambi Isl, SE Sumatra
- Item 336 Jambi, SE Sumatra
- Item 337 Lampung, SE Sumatra
- Item 338 Lunik / Lampung, SE Sumatra
- Item 339 Lampung, SE Sumatra.(Indonesia heritage.org)
- Item 340 Jambi, SE Sumatra (Indonesia heritage.org)
- Item 341 Deli Serdang, Medan, N. Sumatra
- Item 342 Toba Art cases
- Item 343 Toba Art cases, (ebay sale)
- Item 344 Toba Art cases, Vancouver museum
- Item 345 Minangkabau (Leiden museum)
- Item 346 Lampung, SE Sumatra
- Item 347 Jambi Isl, SE Sumatra
- Item 348 Lampung, SE Sumatra
- Item 349 Riau, Sumatra
- Item 350 Indragiri Hulu, Riau, Sumatra
- Item 351 Pulau Mas, Sapat, S-E Riau, Sumatra
- Item 352 Medan, N. Sumatra
- Item 353 Medan, N. Sumatra
- Item 354 Medan, N. Sumatra

- Item 355 Riau, Sumatra
- Item 356 pulau Lunik, Sumatra
- Item 357 Indragiri Hulu, Riau, Sumatra
- Item 358 Lampung ?, Sumatra
- Item 359 Riau, Sumatra
- Item 360 Riau, Sumatra
- Item 361 Bengkalis, Riau dct.
- Item 362 Pekanbaru, Riau, Sumatra
- Item 363 Robitah, Pekanbaru, Riau, Sumatra
- Item 364 Robitah, Pekanbaru, Riau, Sumatra
- Item 365 Robitah, Pekanbaru, Riau, Sumatra
- Item 366 Robitah, Pekanbaru, Riau, Sumatra
- Item 367 Firdaus in Siak, Riau dct, Sumatra.
- Item 368 Pekanbaru, Riau, Sumatra
- Item 369 Pekanbaru, Riau, Sumatra
- Item 370 Siak, Riau, Sumatra
- Item 371 Suhami Durhaka, Riau, Sumatra
- Item 372 Robitah, Pekanbaru, Riau, Sumatra
- Item 373 Robithah, Pekanbaru, Riau, Sumatra
- Item 374 Robithah, Pekanbaru, Riau, Sumatra
- Item 375 Siak, Riau, Sumatra
- Item 376 Lampung, Sumatra
- Item 377 Tanjung Batu, Riau Isl Sumatra
- Item 378 Dumai, Bengkalis, Sumatra
- Item 379 Ryan SYAPUTRA, Riau, Sumatra
- Item 380 Ryan SYAPUTRA, Riau, Sumatra
- Item 381 Ryan SYAPUTRA, Riau, Sumatra
- Item 382 Indragiri Hulu, Riau, Sumatra
- Item 383 Indragiri Hulu, Riau, Sumatra
- Item 384 Indragiri Hulu, Riau, Sumatra
- Item 385 Siak, Riau dct, Sumatra.
- Item 386 Pekanbaru, Riau, Sumatra
- Item 387 Pekanbaru, Riau, Sumatra
- Item 388 Bintan Isl, Riau arch., Sumatra
- Item 389 Jambi Isl, SE Sumatra
- Item 390 Riau, Sumatra
- Item 391 Lampung, Sumatra
- Item 392 Lampung, Sumatra
- Item 393 Lampung, Sumatra
- Item 394 Lampung, Sumatra
- Item 395 Pekanbaru, Riau, Sumatra
- Item 396 Pekanbaru, Riau, Sumatra
- Item 397 Pekanbaru, Riau, Sumatra

http://intheqapbetween.free.fr/pierre/GAMBUS/PROJECT/4b_PORTFOLIO_part4b.pdf

PART4b : ALAM MELAYU : MALAYSIA MAINLAND

- Item 400 Musée de Genève
- Item 401 Malacca
- Item 402 Batu Pahat, Johor
- Item 403 Batu Pahat, Johor
- Item 404 Batu Pahat, Johor
- Item 405 Batu Pahat, Johor
- Item 406 Metropolitan Museum, NYC
- Item 407 Malaysia / Scottsdale museum, AZ
- Item 414 Kasiman, Johor Bahru
- Item 415 Johor ?
- Item 416 Johor Baru, Johor
- Item 417 : Fadziil Ahmad, Johor
- Item 418 : Kasiman, Johor Bahru
- Item 419 : Kasiman, Johor Bahru
- Item 420 : Kasiman, Johor Bahru

http://intheqapbetween.free.fr/pierre/GAMBUS/PROJECT/4d_PORTFOLIO_part4d.pdf
http://intheqapbetween.free.fr/pierre/GAMBUS/PROJECT/4g_PORTFOLIO_part4g.pdf
PART4D & G : ALAM MELAYU : BANGKA & BELITUNG

The Dambus (Bangka Isl)

- Item 613 Pak Usni, Belitung Isl, SE Sumatra
- Item 614 Bangka, SE Sumatra
- Item 615 Bangka, SE Sumatra
- Item 616 Bangka, SE Sumatra
- Item 617 Kusiyadi, Panang, Bangka Isl, SE Sumatra
- Item 618 Kusiyadi, Panang, Bangka Isl, SE Sumatra
- Item 619 Pak Usni, Belitung Isl, SE Sumatra
- Item 620 Pak Usni, Belitung Isl, SE Sumatra
- Item 621 Pak Usni, Belitung Isl, SE Sumatra
- Item 622 Pak Usni, Belitung Isl, SE Sumatra
- Item 623 Pak Usni, Belitung Isl, SE Sumatra
- Item 624 Bangka, SE Sumatra
- Item 625 Bangka, SE Sumatra
- Item 626 Bangka, SE Sumatra
- Item 627 Bangka, SE Sumatra
- Item 628 Bangka, SE Sumatra
- Item 629 bass ; Bangka, SE Sumatra
- Item 630 Bangka Isl, SE Sumatra
- Item 631 Bangka Isl, SE Sumatra
- Item 632 Bangka Isl, SE Sumatra
- Item 633 Zarotti, Bangka Isl, SE Sumatra
- Item 634 Zarotti, Bangka Isl, SE Sumatra
- Item 635 Bangka Isl, SE Sumatra
- Item 636 (OLX) Bangka Isl, SE Sumatra
- Item 637 (OLX) Bangka Isl, SE Sumatra
- Item 638 Pak Usni, Belitung Isl, SE Sumatra
- Item 639 Zarotti, Bangka Isl, SE Sumatra
- Item 640 Zarotti, Bangka Isl, SE Sumatra
- Item 641 Zarotti, Bangka Isl, SE Sumatra
- Item 642 Bangka Isl, SE Sumatra
- Item 643 Pak Usni, Belitung Isl, SE Sumatra
- Item 644 Pak Usni, Belitung Isl, SE Sumatra
- Item 645 Zarotti, Bangka Isl, SE Sumatra
- Item 646 Zarotti, Bangka Isl, SE Sumatra
- Item 647 Bangka Isl, SE Sumatra
- Item 648 Pak Usni, Belitung Isl, SE Sumatra
- Item 649 Kusukeni, Bangka Isl, SE Sumatra
- Item 650 Bangka Isl, SE Sumatra
- Item 651 Pak Usni, Belitung Isl, SE Sumatra
- Item 652 Paksu, Muntok, West Bangka Isl,
- Item 653 Paksu, Muntok, West Bangka Isl,
- Item 654 Paksu, Muntok, West Bangka Isl,
- Item 655 Paksu, Muntok, West Bangka Isl,
- Item 656 Paksu, Muntok, West Bangka Isl,
- Item 657 Zarotti, Bangka Isl, SE Sumatra
- Item 658 Kusiyadi, Panang, Bangka Isl, SE Sumatra
- Item 659 Kusiyadi, Panang, Bangka Isl, SE Sumatra
- Item 660 Paksu, Muntok, West Bangka Isl,
- Item 661 Pak Usni, Belitung Isl, SE Sumatra
- Item 662 Pak AKIL (Zarotti),Bangka Isl, SE Sumatra
- Item 663 Kusiyadi, Panang, Bangka Isl, SE Sumatra
- Item 664 Pak Arfai, Bangka Isl, SE Sumatra
- Item 665 Busmail, Bangka Isl, SE Sumatra

http://intheqapbetween.free.fr/pierre/GAMBUS_PROJECT/05a_PORTFOLIO_part5a.pc
http://intheqapbetween.free.fr/pierre/GAMBUS_PROJECT/05e_PORTFOLIO_part5e.pc
http://intheqapbetween.free.fr/pierre/GAMBUS_PROJECT/05h_PORTFOLIO_part5h.pc

PART5 : BORNEO (SABAH / SARAWAK/ W. KALIMANTAN)

- Item 683 Semporna, E. Sabah, Bornéo
- Item 684 Labuan, Sabah, Bornéo
- Item 689 Kota Kinabalu, Sabah, Borneo
- Item 690 Kuching, Sarawak, Borneo
- Item 691 Borneo ?
- Item 692 Borneo ?
- Item 693 Borneo – Metropolitan
- Item 696 Sumatra? Kalimantan?, Bornéo
- Item 697 Beaufort, Sabah, Borneo
- Item 698 Brunei, Borneo
- Item 699 Beaufort, Sabah, Borneo
- Item 702 Saratok, Sarawak –H Penghulu
- Item 703 Derawan isl, Sarawak
- Item 704 Sarawak? – Kraftang Muz., Johor
- Item 705 Brunei, Borneo
- Item 706 Brunei, Borneo
- Item 707 Brunei, Borneo
- Item 708 Brunei, Borneo
- Item 709 Brunei, Bornéo
- Item 710 bruneians of Papar, Sabah
- Item 711 Kota Kinabalu, Sabah
- Item 712 bruneians of Weston, Sabah
- Item 713 Lubok Weston, Sabah, Borneo
- Item 714 Sarawak, Bornéo
- Item 715 Membakut, Sabah, Borneo
- Item 716 Weston, Sabah, Borneo
- Item 717 Segayar River, W. Kalimantan, Bornéo
- Item 718 gambus Biawak of Papar, Sabah
- Item 719 Kota Bharu, S. Kalimantan, Bornéo
- Item 720 Rainforrest museum, Kuching
- Item 721 Sekadau, NW Kalimantan
- Item 722 bruneians of Papar, Sabah
- Item 723 (Kecil) bruneians of Papar, Sabah
- Item 724 bruneians of Papar, Sabah
- Item 725 bruneians of Papar, Sabah
- Item 726 bruneians of Papar, Sabah
- Item 727 Kumai, W. Kalimantan
- Item 728 Ketapang, W. Kalimantan
- Item 729 Sanggau, W. Kalimantan
- Item 730 Pontianak, W. Kalimantan
- Item 737 Sabah, Bornéo
- Item 738 Sabah, Bornéo
- Item 739 Saratok, Sarawak, Bornéo
- Item 740 Seri Serbang?, Sabah, Bornéo
- Item 741 Seri Serbang, Sabah, Bornéo
- Item 742 Kutai, E. Kalimantan, Bornéo
- Item 743 Sabah, Bornéo
- Item 744 Sabah, Bornéo
- Item 748 Sabah, Bornéo
- Item 749 Kotawaringin, SW Kalimantan
- Item 750 maker Osman Ali, Papar, Sabah

- Item 751 maker Osman Ali, Papar, Sabah
- Item 752 maker Osman Ali, Papar, Sabah
- Item 753 Sintang, W. Kalimantan
- Item 754 Sanggar, W. Kalimantan
- Item 755 Brunei, Borneo
- Item 756 Tanjung Selor, Kalimantan
- Item 757 Tumpang Negeri, Kalimantan Barat
- Item 758 North Borneo
- Item 759 Matap/Sanggau, W. Kalimantan
- Item 760 Matap/Sanggau, W. Kalimantan
- Item 761 Matap/Sanggau, W. Kalimantan
- Item 762 Sepauk, W. Kalimantan
- Item 763 Sepauk, W. Kalimantan
- Item 764 Matap/Sanggau, W. Kalimantan
- Item 765 Matap/Sanggau, W. Kalimantan
- Item 766 Matap/Sanggau, W. Kalimantan
- Item 767 Matap/Sanggau, W. Kalimantan
- Item 768 Lingkugan/Beaufort, Sabah
- Item 769 Sukamara, Kotawaringin, SW Kalimantan
- Item 770 Sukamara, Kotawaringin, SW Kalimantan
- Item 771 Sukamara, Kotawaringin, SW Kalimantan
- Item 772 Sukamara, Kotawaringin, SW Kalimantan
- Item 773 Sukamara, Kotawaringin, SW Kalimantan
- Item 774 Sukamara, Kotawaringin, SW Kalimantan
- Item 775 Sukamara, Kotawaringin, SW Kalimantan

http://intheqapbetween.free.fr/pierre/GAMBUS_PROJECT/05b_PORTFOLIO
http://intheqapbetween.free.fr/pierre/GAMBUS_PROJECT/05g_PORTFOLIO

E. KALIMANTAN

- Item B00 E. Kalimantan, Bornéo
- Item B01 E. Kalimantan, Bornéo
- Item B02 Tana Paser, E. Kalimantan, Bornéo
- Item B03 Asfian Nur GUSPRADA E. Kalimantan, Bornéo
- Item B04 Rinto TAMPILANG, E. Kalimantan,
- Item B05 Tulu Paser, E. Kalimantan,
- Item B06 Tulu Paser, E. Kalimantan,
- Item B07 Tana Paser, E. Kalimantan, Bornéo
- Item B08 Berau, E. Kalimantan, Bornéo
- Item B09 unclear, E. Kalimantan, Bornéo
- Item B10 Kutai, Samarinda, Kalimantan, Bornéo
- Item B11 Tenggarung, E. Kalimantan, Bornéo
- Item B12 Muarah Kaman, Kalimantan, Bornéo
- Item B13 Tana Paser, E. Kalimantan, Bornéo
- Item B14 Tana Paser, E. Kalimantan, Bornéo
- Item B15 Berau, E. Kalimantan, Bornéo
- Item B16 Talisayan, E. Kalimantan, Bornéo
- Item B17 Segayar River, E. Kalimantan, Bornéo
- Item B18 Tana Paser, E. Kalimantan, Bornéo
- Item B19 Tana Paser, E. Kalimantan, Bornéo
- Item B30 Belangkor, Kutai, E. Kalimantan, Bornéo
- Item B42 Kutai, E. Kalimantan, Bornéo
- Item B43 Kutai, E. Kalimantan, Bornéo
- Item B44 Muara Kaman, E. Kalimantan, Bornéo
- Item B45 Buta E. Kalimantan, Bornéo
- Item B46 Tenggarung, E. Kalimantan, Bornéo
- Item B47 Tenggarung, E. Kalimantan, Bornéo
-
- Item B56 Kalimantan, Bornéo
- Item B57 Kalimantan, Bornéo
- Item B58 Kalimantan, Bornéo
- Item B78 Tenggarung, E. Kalimantan, Bornéo
- Item B79 Tenggarung, E. Kalimantan, Bornéo
- Item B80 Tenggarung, E. Kalimantan, Bornéo
- Item B81 Tenggarung, E. Kalimantan, Bornéo
- Item B82 Tenggarung, E. Kalimantan, Bornéo
- Item 683 Semporna, E. Sabah, Bornéo
- Item B87 Kalimantan, Bornéo
- Item B88 Mahakam river, Kutai, E. Bornéo
- Item B89 Mahakam river, Kutai, E. Bornéo
- Item B97 Kutai, Samarinda, E. Kalimantan, Bornéo
- Item B98 Kutai, Samarinda, E. Kalimantan, Bornéo
- Item B99 Kutai, Samarinda, E. Kalimantan, Bornéo
- Item BA0 E. Kalimantan, Bornéo
- Item BA1 E. Kalimantan, Bornéo
- Item BA2 Akbar Haka, E. Kalimantan, Bornéo
- Item BA3 E. Kalimantan, Bornéo
- Item BA4 Andry WIRANATA, E. Kalimantan, Bornéo

http://intheqapbetween.free.fr/pierre/GAMBUS_PROJECT/05c_PORTFOLIO_part5c.pdf
http://intheqapbetween.free.fr/pierre/GAMBUS_PROJECT/05d_PORTFOLIO_part5d.pdf
http://intheqapbetween.free.fr/pierre/GAMBUS_PROJECT/05f_PORTFOLIO_part5f.pdf

S. KALIMANTAN

- Item C17 Segayar River, W. Kalimantan, Bornéo
- Item C18 Kotawaringin, SW Kalimantan
- Item C19 Kota Bharu, S. Kalimantan, Bornéo
- Item C20 Banjarmasin, S. Kalimantan, Bornéo
- Item C21 Banjarmasin, S. Kalimantan, Bornéo
- Item C22 Banjarmasin, S. Kalimantan, Bornéo
- Item C23 Banjarmasin, S. Kalimantan, Bornéo
- Item C24 Banjarmasin, S. Kalimantan, Bornéo
- Item C25 Banjarmasin, S. Kalimantan, Bornéo
- Item C26 Banjarmasin, S. Kalimantan, Bornéo
- Item C27 Banjarmasin, S. Kalimantan, Bornéo
- Item C28 Banjarmasin, S. Kalimantan, Bornéo
- Item C29 Banjarmasin, S. Kalimantan, Bornéo
- Item C30 maker ANWAR, Banjar, S. Kalimantan, Bornéo
- Item C31 Kota Baru, S. Kalimantan, Bornéo
- Item C32 Banjarmasin, S. Kalimantan, Bornéo
- Item C33 Banjarmasin, S. Kalimantan, Bornéo
- Item C34 Banjarmasin, S. Kalimantan, Bornéo
- Item C35 Banjarmasin, S. Kalimantan, Bornéo
- Item C36 Banjarmasin, S. Kalimantan, Bornéo
- Item C37 maker Alpian, Haruyan, S. Kalimantan, Bornéo
- Item C38 maker Alpian, Haruyan, S. Kalimantan, Bornéo
- Item C39 maker Alpian, Haruyan, S. Kalimantan, Bornéo
- Item C40 maker Alpian, Haruyan, S. Kalimantan, Bornéo
- Item C41 maker Alpian?
- Item C42 Banjarmasin, S. Kalimantan, Bornéo
- Item C43 Banjarmasin, S. Kalimantan, Bornéo
- Item C44 Banjarmasin, S. Kalimantan, Bornéo
- Item C45 Norman Gambus, Kotabaru, S. Kalimantan, Bornéo
- Item C46 souvenir Kalimantan, Bornéo
- Item C47 souvenir Kalimantan, Bornéo
- Item C48 Norman Gambus, Kotabaru, S. Kalimantan, Bornéo
- Item C49 Kotawaringin, SW Kalimantan
- Item C50 maker Anwar, Banjarmasin, S. Kalimantan,
- Item C51 maker ANUR, Banjar, S. Kalimantan, Bornéo
- Item C56 Kalimantan, Bornéo
- Item C57 Kalimantan, Bornéo
- Item C58 maker Hayati, Banjarmasin, S. Kalimantan,
- Item C59 Banjarmasin, S. Kalimantan, Bornéo
- Item C60 Banjarmasin, S. Kalimantan, Bornéo
- Item C61 Banjarmasin, S. Kalimantan, Bornéo
- Item C62 maker Hayati, Banjarmasin, S. Kalimantan,
- Item C63 Banjarmasin, S. Kalimantan, Bornéo
- Item C64 Banjarmasin, S. Kalimantan, Bornéo
- Item C65 maker HIDAYAT, Banjar, S. Kalimantan, Bornéo
- Item C66 Banjamasin, S. Kalimantan, Bornéo
- Item C67 maker Farhul ANWAR, Banjarmasin, S. Kalimantan,
- Item C68 maker Syir Hayati, Banjarmasin, S. Kalimantan,
- Item C68 maker Syir Hayati, Banjarmasin, S. Kalimantan,
- Item C69 maker ANSYARI, Barikin, S. Kalimantan, Bornéo
- Item C70 Banjamasin, S. Kalimantan, Bornéo
- Item C71 Kota Banjar, S. Kalimantan, Bornéo
- Item C72 Kota Banjar, S. Kalimantan, Bornéo
- Item C73 Kota Banjar, S. Kalimantan, Bornéo
- Item C74 maker Anwar, Banjarmasin, S. Kalimantan,
- Item C75 maker ALPIAN, Haruyan, S. Kalimantan,
- Item C76 maker ALPIAN, Haruyan, S. Kalimantan,
- Item C77 Banjarmasin, S. Kalimantan, Bornéo
- Item C78 Banjarmasin, S. Kalimantan, Bornéo
- Item C79 Norman Gambus, Kotabaru, S. Kalimantan, Bornéo

- Item C80 maker Farhul ANWAR, Banjarmasin, S. Kalimantan,
- Item C81 maker Farhul ANWAR, Banjarmasin, S. Kalimantan,
- Item C82 maker ANSYARI, Barikin, S. Kalimantan, Bornéo
- Item C83 maker ANSYARI, Barikin, S. Kalimantan, Bornéo
- Item C84 maker RURUD, Barikin, S. Kalimantan, Bornéo
- Item C85 Banjarmasin, S. Kalimantan, Bornéo
- Item C86 Banjarmasin, S. Kalimantan, Bornéo
- Item C87 Kalimantan, Bornéo
- Item C88 Mahakam river, Kutai, E. Bornéo
- Item C89 Matarpura, S. Kalimantan, Bornéo
- Item C90 maker Hayati, Banjarmasin, S. Kalimantan,
- Item C91 maker Andre, Kota Baru, S. Kalimantan, Bornéo
- Item C92 maker HIDAYAT, Banjar, S. Kalimantan, Bornéo
- Item C93 maker ANWAR, Banjar, S. Kalimantan, Bornéo
- Item C94 maker ANUR, Banjar, S. Kalimantan, Bornéo
- Item C95 maker ANUR, Banjar, S. Kalimantan, Bornéo
- Item C96 unknown, Banjar, S. Kalimantan, Bornéo
- Item C97 unknown, Banjar, S. Kalimantan, Bornéo
- Item C98 Norman Gambus, Kotabaru, S. Kalimantan, Bornéo
- Item C99 Norman Gambus, Kotabaru, S. Kalimantan, Bornéo
- Item CA0 maker Hayati, Banjarmasin, S. Kalimantan,
- Item CA1 Banjarmasin, S. Kalimantan, Bornéo
- Item CA2 maker Hayati, Banjarmasin, S. Kalimantan,
- Item CA3 Banjarmasin, S. Kalimantan, Bornéo
- Item CA4 maker Hayati, Banjarmasin, S. Kalimantan,
- Item CA5 Banjarmasin, S. Kalimantan, Bornéo
- Item CA6 SYABANI, Banjarmasin, S. Kalimantan, Bornéo
- Item CA7 SYABANI, Banjarmasin, S. Kalimantan, Bornéo
- Item CA8 SYABANI, Banjarmasin, S. Kalimantan, Bornéo
- Item CA9 Norman Gambus, Kotabaru, S. Kalimantan, Bornéo
- Item CAA Norman Gambus, Kotabaru, S. Kalimantan, Bornéo
- Item CAB Norman Gambus, Kotabaru, S. Kalimantan, Bornéo
- Item CAC Norman Gambus, Kotabaru, S. Kalimantan, Bornéo
- Item CAD Norman Gambus, Kotabaru, S. Kalimantan, Bornéo
- Item CAE Norman Gambus, Kotabaru, S. Kalimantan, Bornéo
- Item CAF maker Syir Hayati, Banjarmasin, S. Kalimantan,
- Item CAG maker Syir Hayati, Banjarmasin, S. Kalimantan,
- Item CAH Banjarmasin, S. Kalimantan, Bornéo
- Item CAI Banjarmasin, S. Kalimantan, Bornéo
- Item CAJ maker ANWAR, Banjar, S. Kalimantan, Bornéo
- Item CAK maker Syir Hayati, Banjarmasin, S. Kalimantan,
- Item CAL maker ANUR, Banjar, S. Kalimantan, Bornéo
- Item CAM maker ANUR, Banjar, S. Kalimantan, Bornéo
- Item CAN maker Syir Hayati, Banjarmasin, S. Kalimantan,
- Item CAP Norman Gambus, Kotabaru, S. Kalimantan, Bornéo
- Item CAQ Norman Gambus, Kotabaru, S. Kalimantan, Bornéo
- Item CAR Norman Gambus, Kotabaru, S. Kalimantan, Bornéo

http://inthe-gap-between.free.fr/pierre/GAMBUS/PROJECT/06a_PORTFOLIO_part6a.pdf
http://inthe-gap-between.free.fr/pierre/GAMBUS/PROJECT/06b_PORTFOLIO_part6b.pdf
http://inthe-gap-between.free.fr/pierre/GAMBUS/PROJECT/06c_PORTFOLIO_part6c.pdf
http://inthe-gap-between.free.fr/pierre/GAMBUS/PROJECT/06d_PORTFOLIO_part6d.pdf
http://inthe-gap-between.free.fr/pierre/GAMBUS/PROJECT/06e_PORTFOLIO_part6e.pdf

PART6 : LESSER SUNDA: SUMBAWA, LOMBOK (NTB)

- Item L00 Lombok Isl. NTB
- Item L01 As Babuju, Sumbawa isl., NTB
- Item L02 Sumbawa isl, NTB
- Item L03 Lombok Isl. NTB
- Item L04 Lombok Isl. NTB
- Item L05 anonymous, Mataram, Lombok Isl, NTB
- Item L06 "Gambo" – Bima, Sumbawa isl., NTB
- Item L07 Lombok Isl. NTB
- Item L08 Lombok Isl. NTB
- Item L09 Lombok Isl. NTB
- Item L10 toy instrument, Bali, NTT,
- Item L11 Amat BOCONG, Lombok Isl. NTB
- Item L12 (Camden) - Lombok Isl. NTB
- Item L13 Lombok Isl. NTB
- Item L14 Lombok Isl. NTB
- Item L15 Lombok Isl. NTB
- Item L16 Lombok Isl. NTB
- Item L17 Lombok Isl. NTB
- Item L18 Lombok Isl. NTB
- Item L19 "Gambo" – Bima, Sumbawa isl., NTB
- Item L20 "Gambo" – Bima, Sumbawa isl., NTB
- Item L21 "Gambo" – Bima, Sumbawa isl., NTB
- Item L22 Lombok Isl. NTB
- Item L23 Lombok Isl. NTB
- Item L30 Gili isl, W Lombok Isl. NTB
- Item L31 Gili isl, W Lombok Isl. NTB
- Item L32 Gili isl, W Lombok Isl. NTB
- Item L33 Gili isl, W Lombok Isl. NTB
- Item L34 Gili isl, W Lombok Isl. NTB
- Item L35 Lombok Isl. NTB
- Item L36 Lombok Isl. NTB
- Item L37 Lombok Isl. NTB
- Item L38 Lombok Isl. NTB
- Item L39 Lombok Isl. NTB
- Item L40 "Gambo" – Bima, Sumbawa isl., NTB
- Item L41 "Gambo" – Bima, Sumbawa isl., NTB
- Item L42 Gili isl, W Lombok Isl. NTB
- Item L43 Lombok Isl. NTB
- Item L44 E. Lombok Isl. NTB
- Item L45 Lombok Isl. NTB
- Item L46 Lombok Isl. NTB
- Item L47 E. Lombok Isl. NTB

- Item L72 Lombok Isl. NTB
- Item L73 Mataram market, Lombok isl., NTB
- Item L74 "Gambo" – Bima, Sumbawa isl., NTB
- Item L75 "Gambo" – Bima, Sumbawa isl., NTB
- Item L76 "Gambo" – Daha, Bima, NTB
- Item L77 Ustd Sawal, Lombok Isl., NTB
- Item L78 Ustd Afendi, Lombok Isl., NTB
- Item L79 Ustd Afendi, Lombok Isl., NTB
- Item L80 Lombok Isl., NTB

- Item L81 Lombok Isl., NTB
- Item L82 Lombok Isl. , NTB
- Item L83 Lombok Isl. , NTB
- Item L84 Lombok Isl. , NTB
- Item L85 Mataram museum, Lombok Isl, NTB
- Item L86 anonymous, Lombok Isl, NTB
- Item L87 ebay, Lombok Isl, NTB
- Item L88 anonymous, Lombok Isl, NTB
- Item L89 anonymous, Lombok Isl, NTB
- Item L90 ebay, Lombok Isl, NTB
- Item L91 (Mr Sondheim), Lombok Isl, NTB
- Item L92 ebay, Lombok Isl, NTB
- Item L93 ebay, Lombok Isl, NTB
- Item L94 Lombok Isl. NTB
- Item L95 Lombok Isl. NTB
- Item L96 Lombok Isl. NTB
- Item L97 Lombok Isl. NTB
- Item L98 Lombok Isl. NTB
- Item L99 Lombok Isl. NTB

http://inthe-gap-between.free.fr/pierre/GAMBUS_PROJECT/PORTFOLIO_part7.pdf

PART7 : FLORES (NTT)

- Item 945 Lembata Isl, E. Flores, NTT,
- Item 946 Bugis, Ende, Flores, NTT,
- Item 947 Sikka, Flores, NTT,
- Item 948 Labuan Bajo, SW Flores, NTT
- Item 949 disambiguation *Bijol / Boko* in Flores
- Item 950 NTT,
- Item 951 NTT,
- Item 952 Syarat Libana, Tinale, Alor, Flores,
- Item 953 Ende, Flores, NTT,
- Item 954 Ende, Flores, NTT ?,
- Item 955 Lamaleha, E. Flores, NTT,
- Item 956 Adonara, E. Flores, NTT,
- Item 957 Indonesia (Vancouver museum).
- Item 958 Lamalohot, E. Flores, NTT,
- Item 959 Alor, E. Flores, NTT (Indonesia Heritage.org)
- Item 960 Sudin, Adonara, E. Flores, NTT,
- Item 961 Lembata, E. Flores, NTT,
- Item 962 Lembata?, E. Flores, NTT,
- Item 963 Alor museum, E. Flores, NTT (Indonesia)
- Item 964 SW Manggarai, Flores, NTT (Indonesia)
- Item 965 Flores, NTT,
- Item 966 Maumere, Flores, NTT,
- Item 967 Disambiguation Benjol / Maumere, Flores, NTT,
- Item 968 Maumere, Flores, NTT,
- Item 969 Maumere, Flores, NTT,
- Item 970 Maumere, Flores, NTT,
- Item 971 Lembata?, E. Flores, NTT,
- Item 972 Lamalohot, E. Flores, NTT,

http://inthe-gap-between.free.fr/pierre/GAMBUS_PROJECT/08a_PORTFOLIO_part8a.pdf
http://inthe-gap-between.free.fr/pierre/GAMBUS_PROJECT/08c_PORTFOLIO_part8c.pdf

PART8a : S.SULAWESI & MOLUCCAS

- Item 846 Kei Isl, Moluccas
- Item 847 Selayar, south Sulawesi
- Item 848 Warkop, Selayar arch, south Sulawesi Isl.
- Item 849 Makassar, south Sulawesi Isl.
- Item 850 Selayar, south Sulawesi
- Item 851 Wakantolalo, south Sulawesi
- Item 852 Badjao, Celebes sea
- Item 853 Pare-Pare, south Sulawesi Isl
- Item 854 Selayar, south Sulawesi
- Item 855 Selayar, south Sulawesi
- Item 856 Selayar, south Sulawesi
- Item 857 Jenepon, south Sulawesi
- Item 858 Gowa, south Sulawesi
- Item 859 Makassar, south Sulawesi
- Item 860 Maros, south Sulawesi Isl
- Item 861 Jenepon ?, south Sulawesi
- Item 864 Muna, S-E Sulawesi isl.
- Item 866 Sulawesi Isl
- Item 868 Pangkep, south Sulawesi Isl.
- Item 869 Makassar, south Sulawesi Isl.
- Item 870 Mangkutana, Luwu , East Sulawesi Isl.
- Item 871 Buton Isl, S-East Sulawesi Isl.
- Item 872 Makasar, ? Sulawesi Isl
- Item 873 Pare-Pare, south Sulawesi Isl
- Item 874 Makassar, south Sulawesi Isl
- Item 875 Makassar, south Sulawesi Isl
- Item 876 Makassar, south Sulawesi Isl
- Item 877 Makassar, south Sulawesi Isl
- Item 878 Makassar, south Sulawesi Isl
- Item 879 Kota Kendari, SE Sulawesi Isl
- Item 880 Wakatobi, SE Sulawesi Isl
- Item 881 Gowa?, south Sulawesi Isl
- Item 882 Selayar, south Sulawesi
- Item 883 Makassar, south Sulawesi Isl
- Item 884 Pangkep, south Sulawesi Isl
- Item 885 Moluccas
- Item 886 Sanana Isl, Sula arch., North Moluccas
- Item 887 Makassar, south Sulawesi Isl
- Item 888 Makassar, south Sulawesi Isl
- Item 889 Gowa, south Sulawesi Isl
- Item 890 Gowa, south Sulawesi Isl
- Item 891 Makassar?, south Sulawesi Isl
- Item 892 Muna?, S-E Sulawesi isl.
- Item 893 Muna, SE Sulawesi Isl
- Item 894 Buton?, S-E Sulawesi isl.
- Item 896 Manuk, Moluccas
- Item 897 Buton Isl, SE Sulawesi Isl
- Item 898 Sanrobengi Isl, W Sulawesi Isl
- Item 899 South Sulawesi, Selayar?

<ul style="list-style-type: none"> - Item 900 disambiguation Jukulele Moluccas - Item 902 Makassar, south Sulawesi Isl - Item 903 Bantoeng, south Sulawesi Isl - Item 904 Bantoeng, south Sulawesi Isl - Item 905 Makassar, south Sulawesi Isl - Item 906 Turatea, south Sulawesi Isl - Item 907 Makasar, Sulawesi Isl - Item 908 Tokali tribesmen, SE Sulawesi Isl - Item 909 Kota Kendari, SE Sulawesi Isl - - Item 911 Selayar Arch., south Sulawesi Isl - Item 912 Bullu Tellue, south Sulawesi Isl - 	<p style="text-align: center;">http://inthegapbetween.free.fr/pierre/GAMBUS_PROJECT/08b_PORTFOLIO_part8b.pdf</p> <p style="text-align: center;"><u>PART8b : N.SULAWESI</u></p> <ul style="list-style-type: none"> - Item W01 Gorontalo, north Sulawesi Isl - Item W02 Mongondow, Kotamobagu, north Sulawesi Isl - Item W03 Mongondow, Kotamobagu, north Sulawesi Isl - Item W04 Mongondow, Kotamobagu, north Sulawesi Isl - Item W05 Mongondow, Kotamobagu, north Sulawesi Isl - Item W52 Badjao, Celebes sea - Item W53 Gorontalo, north Sulawesi Isl - Item W63 Toli Toli, N. Sulawesi Isl - Item W65 Toli Toli, N. Sulawesi Isl - Item W66 Sulawesi Isl - Item W67 Toli Toli, N. Sulawesi Isl (Leiden muzeum) - Item W79 Gorontalo, north Sulawesi Isl - Item W80 Gorontalo, north Sulawesi Isl - Item W81 Gorontalo, north Sulawesi Isl - Item W82 Gorontalo, north Sulawesi Isl (Indonesia heritage) - Item W83 Gorontalo, north Sulawesi Isl - Item W84 Sulawesi ? Borneo? – Roma Museum - Item W92 Gorontalo, north Sulawesi Isl - Item W93 Gorontalo, north Sulawesi Isl - Item W94 Manado, NE Sulawesi Isl - Item W95 Gorontalo, north Sulawesi Isl - Item W96 Manuk, Moluccas - 	<p style="text-align: center;">http://inthegapbetween.free.fr/pierre/GAMBUS_PROJECT/PORTFOLIO_part9.pdf</p> <p style="text-align: center;"><u>PART9 : JAVA</u></p> <ul style="list-style-type: none"> - Item J00 Java - Item J01 Java - Item J02 Java - Item J03 Java - Item J04 Java (Leiden Museum) - Item J05 Surakarta, Java - Item J06 Indonesia ?, TBD - Item J07 Bandung, Java - Item J08 Surakarta, Java - Item J09 Surakarta, Java - Item J10 Pekalongan, Java - Item J16 Indonesia - Item J17 Karawang, Java - Item J18 Karawang, Java - Item J19 Jakarta / Yogyakarta, Java - Item J20 Jakarta, Java - Item J21 mandolin like, Java - Item J22 Malang, E. Java - Item J23 Malang, E. Java - Item J24 Bantang, E. Java -
--	---	---

Item n°: **L10** **TOY INSTRUMENT** FROM **BALI** Owner : souvenirss commonly found for sale (1/7)

Name : Cekuntrung? (Bali Isl, NTB)

Age / Year : 2012?

Observations : ITEM 810 This **this 4 stringed, odd gambus lute** is a local avatar of the ITEM 950 (NTT) in Bali (NTB). There this used to be sold as a souvenir toy-instrument, and the erroneous name of Cekuntrung recently widespread for this. So far , no local user of this was found.

Actually very few **qanbus**-like features. Soundboard is wood made, same as item 950. The lute is made of a gourd, as items 949, neck is not hollowed out. Floating bridge. Most string holder are metal sheet made. Same pegbox design as items from Ende (946, 948) and Bima (L75, L76, L78, L79) = possibly inspired from cello / **biola** making. Acc. description of item 750, the gourd made body is possibly influence of the timorese **Leko Boko Bijol**.

Such gourd-made soundbox structure had been observed in Flores Isl by Jaap KUNST, who noticed that this is featured in local, kemanche-like viele lutery, too. Wood : unknown. (source: ebay)

Diameter Di = about 200 mm

Le = about 700 mm

Lm= about 30 mm

Pi= supposedly 100 mm



Item n°:

L10

TOY INSTRUMENT FROM **BALI**

Owner : souvenirss commonly found for sale

(2/7)

Name : Cekuntrung? (Bali Isl, NTB)

Age / Year : 2012?



Observations : ITEM L10 This ***this 4 stringed, odd gambus lute*** is a local avatar of the ITEM 950 (NTT) in Bali (NTB). There this used to be sold as a souvenir toy-instrument, and the erroneous name of Cekuntrung recently widespread for this. So far , no local user of this was found.

Actually very few ***qanbus***-like features. Soundboard is wood made, same as item 950. The lute is made of a gourd , as items 949, neck is not hollowed out. Floating bridge. Most string holder are metal sheet made. Same pegbox design as items from Ende (946, 948) and Bima (L75, L76, L78, L79) = possibly inspirated from cello / ***biola*** making. Acc. description of ITEM L50, the gourd made body is possibly influence of the timorese ***Leko Boko / Bijol***.

Such gourd-made soundbox structure had been observed in Flores Isl by Jaap KUNST, who noticed that this is featured in local, kemanche-like viele lutery, too. Wood : unknown. (source: ebay)

Diameter Di = about 200 mm

Le = about 700 mm

Lm= about 30 mm

Pi= supposedly 100 mm

Item n°:
L10

TOY INSTRUMENT FROM **BALI**

Owner : souvenirs commonly found for sale

(3/7)

Name : Cekuntrung? (Bali Isl, NTB)

Age / Year : 2012?



Observations : ITEM L10 This **this 4 stringed, odd gambus lute** is a local avatar of the ITEM 950 (NTT) in Bali (NTB). There this used to be sold as a souvenir toy-instrument, and the erroneous name of Cekuntrung recently widespread for this. So far , no local user of this was found.

Actually very few **qanbus**-like features. Soundboard is wood made, same as item 950. The lute is made of a gourd , as items 949, neck is not hollowed out. Floating bridge. Most string holder are metal sheet made. Same pegbox design as items from Ende (946, 948) and Bima (L75, L76, L78, L79) = possibly inspired from cello / **biola** making. Acc. description of ITEM L50, the gourd made body is possibly influence of the timorese **Leko Boko / Bijol**.

Such gourd-made soundbox structure had been observed in Flores Isl by Jaap KUNST, who noticed that this is featured in local, kemanche-like viele lutery, too. Wood : unknown. (source: ebay)

Diameter Di = about 200 mm
Le = about 700 mm
Lm= about 30 mm
Pi= supposedly 100 mm

ITEM 951 a production of toy instruments, supposed from Ende (Flores)

Item n°:
L10

TOY INSTRUMENT FROM **BALI**

Owner : souvenirs commonly found for sale

(4/7)

Name : Cekuntrung? (Bali Isl, NTB)

Age / Year : 2012?



Observations : ITEM L10 This **this 4 stringed, odd gambus lute** is a local avatar of the ITEM 950 (NTT) in Bali (NTB). There this used to be sold as a souvenir toy-instrument, and the erroneous name of Cekuntrung recently widespread for this. So far , no local user of this was found.

Actually very few **qanbus**-like features. Soundboard is wood made, same as item 950. The lute is made of a gourd , as items 949, neck is not hollowed out. Floating bridge. Most string holder are metal sheet made. Same pegbox design as items from Ende (946, 948) and Bima (L75, L76, L78, L79) = possibly inspirated from cello / **biola** making. Acc. description of ITEM L50, the gourd made body is possibly influence of the timorese **Leko Boko / Bijol**.

Such gourd-made soundbox structure had been observed in Flores Isl by Jaap KUNST, who noticed that this is featured in local, kemanche-like viele lutery, too. Wood : unknown. (source: ebay)

Diameter Di = about 200 mm

Le = about 700 mm

Lm= about 30 mm

Pi= supposedly 100 mm

Item n°:
L10

TOY INSTRUMENT FROM **BALI**

Owner : souvenirs commonly found for sale

(5/7)

Name : Cekuntrung? (Bali Isl, NTB)

Age / Year : 2012?



Observations : ITEM L10 This ***this 4 stringed, odd gambus lute*** is a local avatar of the ITEM 950 (NTT) in Bali (NTB). There this used to be sold as a souvenir toy-instrument, and the erroneous name of Cekuntrung recently widespread for this. So far , no local user of this was found.

Actually very few ***qanbus***-like features. Soundboard is wood made, same as item 950. The lute is made of a gourd , as items 949, neck is not hollowed out. Floating bridge. Most string holder are metal sheet made. Same pegbox design as items from Ende (946, 948) and Bima (L75, L76, L78, L79) = possibly inspired from cello / ***biola*** making. Acc. description of ITEM L50, the gourd made body is possibly influence of the timorese ***Leko Boko / Bijol***.

Such gourd-made soundbox structure had been observed in Flores Isl by Jaap KUNST, who noticed that this is featured in local, kemanche-like viele lutery, too. Wood : unknown. (source: ebay)

Diameter Di = about 200 mm

Le = about 700 mm

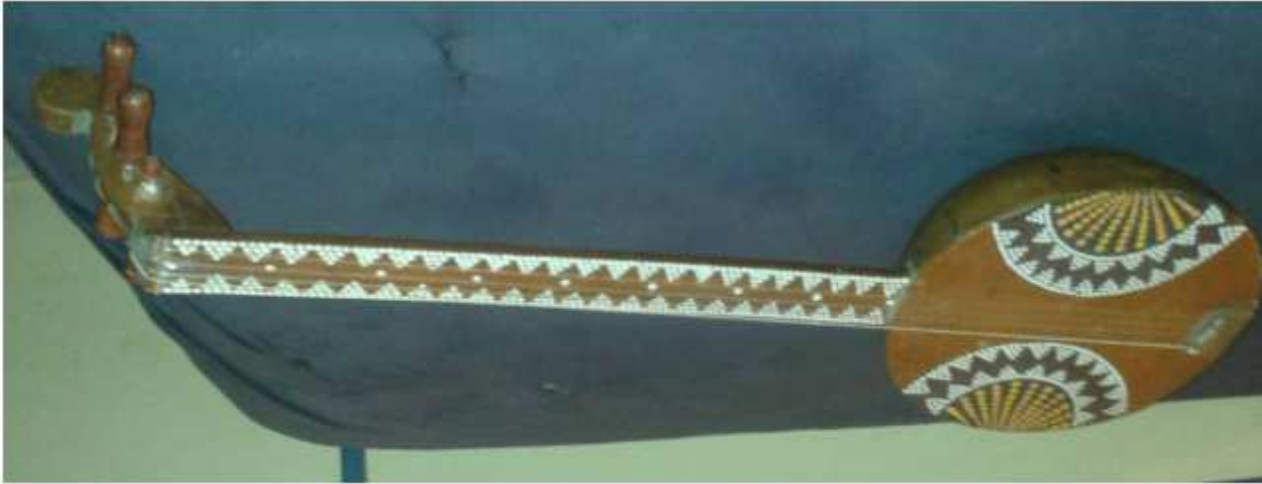
Lm= about 30 mm

Pi= supposedly 100 mm

Item n°: **L10** **TOY INSTRUMENT** FROM **BALI** Owner : souvenirs commonly found for sale **(6/7)**

Name : Cekuntrung? (Bali Isl, NTB)

Age / Year : 2012?



Observations : ITEM L10 This ***this 4 stringed, odd gambus lute*** is a local avatar of the ITEM 950 (NTT) in Bali (NTB). There this used to be sold as a souvenir toy-instrument, and the erroneous name of Cekuntrung recently widespread for this. So far , no local user of this was found.

Actually very few **qanbus**-like features. Soundboard is wood made, same as item 950. The lute is made of a gourd , as items 949, neck is not hollowed out. Floating bridge. Most string holder are metal sheet made. Same pegbox design as items from Ende (946, 948) and Bima (L75, L76, L78, L79) = possibly inspired from cello / **biola** making. Acc. description of ITEM L50, the gourd made body is possibly influence of the timorese **Leko Boko / Bijol**.

Such gourd-made soundbox structure had been observed in Flores Isl by Jaap KUNST, who noticed that this is featured in local, kemanche-like viele lutery, too. Wood : unknown. (source: ebay)

Diameter Di = about 200 mm

Le = about 700 mm

Lm= about 30 mm

Pi= supposedly 100 mm

Item n°:
L10

TOY INSTRUMENT FROM **BALI**

Owner : souvenirs commonly found for sale

(7/7)

Name : Cekuntrung? (Bali Isl, NTB)

Age / Year : 2012?



Observations : ITEM L10 This **this 4 stringed, odd gambus lute** is a local avatar of the ITEM 950 (NTT) in Bali (NTB). There this used to be sold as a souvenir toy-instrument, and the erroneous name of Cekuntrung recently widespread for this. So far , no local user of this was found.

Actually very few **qanbus**-like features. Soundboard is wood made, same as item 950. The lute is made of a gourd , as items 949, neck is not hollowed out. Floating bridge. Most string holder are metal sheet made. Same pegbox design as items from Ende (946, 948) and Bima (L75, L76, L78, L79) = possibly inspired from cello / **biola** making. Acc. description of ITEM L50, the gourd made body is possibly influence of the timorese **Leko Boko / Bijol**.

Such gourd-made soundbox structure had been observed in Flores Isl by Jaap KUNST, who noticed that this is featured in local, kemanche-like viele lutery, too. Wood : unknown. (source: ebay

Diameter Di = about 200 mm

Le = about 700 mm

Lm= about 30 mm

Pi= supposedly 100 mm